



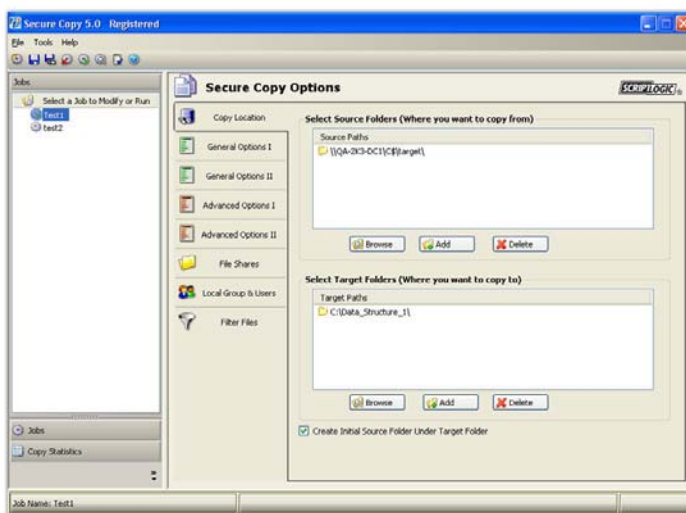
SECURE COPY™

Secure Copy™ is a powerful, comprehensive migration solution that automates the copying of data between Windows NT/2000/2003/2008 servers without the use of agents or scripts. Whether you're migrating from one server to another, consolidating file servers or moving to a NAS/SAN solution, you can easily copy files and folders, NTFS permissions, file shares, local users and groups and compression settings. With a multi-threaded high-speed architecture, migration projects are simplified and the time it takes to complete the project is dramatically shortened.

MIGRATE SERVER DATA WITH EASE

Getting data moved over to a new server is more than merely copying the most recent files and folders to that machine. File security and permissions must be maintained, shared folders need to be reestablished and local groups facilitating access need to be recreated. Having an automated way to copy all files and folders along with their associated attributes, NTFS security, shares and share security, as well as local users and groups would be ideal for any administrator looking to complete a successful, and hands-free migration.

ScriptLogic's Secure Copy empowers administrator's to migrate, consolidate and replicate file servers and minimizes the time and effort needed to perform these types of projects by addressing many of the challenges associated with data migrations. Secure Copy automates the copying of files and folders as well as their attributes, NTFS security, shares and share security. Copy concerns involving locked files being skipped are avoided, files and folders lacking Administrative permissions are still copied and network bandwidth overload is reduced. Secure Copy supports all Windows Operating Systems from NT4 to 2008 with a comprehensive data migration and server consolidation capability that can be scheduled so that your business remains uninterrupted during the migration and your users can remain productive.



Secure Copy's unique interface allows for easier configuration and management of copy jobs.

SIMPLIFY FILE SERVER MIGRATIONS AND CONSOLIDATIONS

Minimize the amount of time needed to set up new file servers without compromising security

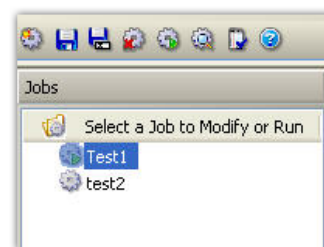
Perform data migrations, consolidations and replications with minimal effort using multi-threaded copying architecture

Avoid security weaknesses by copying data with security intact and not having to recreate file permissions by hand

Recreate file shares and file compression settings automatically during migration

Migrate users onto new file servers whenever is most convenient and least disruptive to business

Overcome the challenges associated with the administrator lacking necessary permissions on a file with Secure Copy's "Administrator Override" feature



Manage, test, run and schedule all of your saved jobs in one convenient tree view.



Secure Copy's functionality has been grouped into two management areas for improved usability.

KEY BENEFITS

Set-up New File Servers Quickly!
Perform migrations, consolidations and replications between file servers with a scheduled, automated solution.

Migrate Configurations Transparently
Migrate file permissions, shares, compression settings, local users and groups, last-modified dates and more automatically and without manual intervention.

Plan Your Projects
Schedule complex data migration jobs or take advantage of Secure Copy's "incremental copy" for a gradual piecemeal migration of users to a new file server.

Maintain Security
Copy files and folders from source server with associated permissions intact on the destination server.

KEY FEATURES

Multi-threaded Architecture
Maximize use of network bandwidth when copying lots of small files.

Migrate Local Users and Groups
Local accounts with file permissions on the source servers are automatically created on the destination server. Accounts can also be migrated to Active Directory or NT 4.0 domains.

Automatic Retry of Failed Files
Locked files are skipped and automatically retried until they become available.

Integration with ScriptLogic's Help Desk Tracking Solution
Seamlessly integrate with BridgeTrak's help desk trouble ticket solution by creating a new service ticket automatically whenever a data migration job completes successfully or fails to complete.

SYSTEM REQUIREMENTS

Secure Copy supports Windows NT/2000/2003/2008 servers

LICENSING

Secure Copy is licensed on a per "named server" basis (both source and target require their own license). Talk to your sales representative about project-based licensing.

For pricing, contact your ScriptLogic reseller or call ScriptLogic at 1.800.813.6415